



"We take fun seriously..."

Portable Anti-Fouling Vacuum



Users Manual



"We take fun seriously..."

Thank you for purchasing the Advantage Portable Vacuum System. We recommend that you take a few minutes to read this owner's manual and familiarize yourself with the proper operation of your system.

Thank you for your purchase and enjoy your vacuum system.

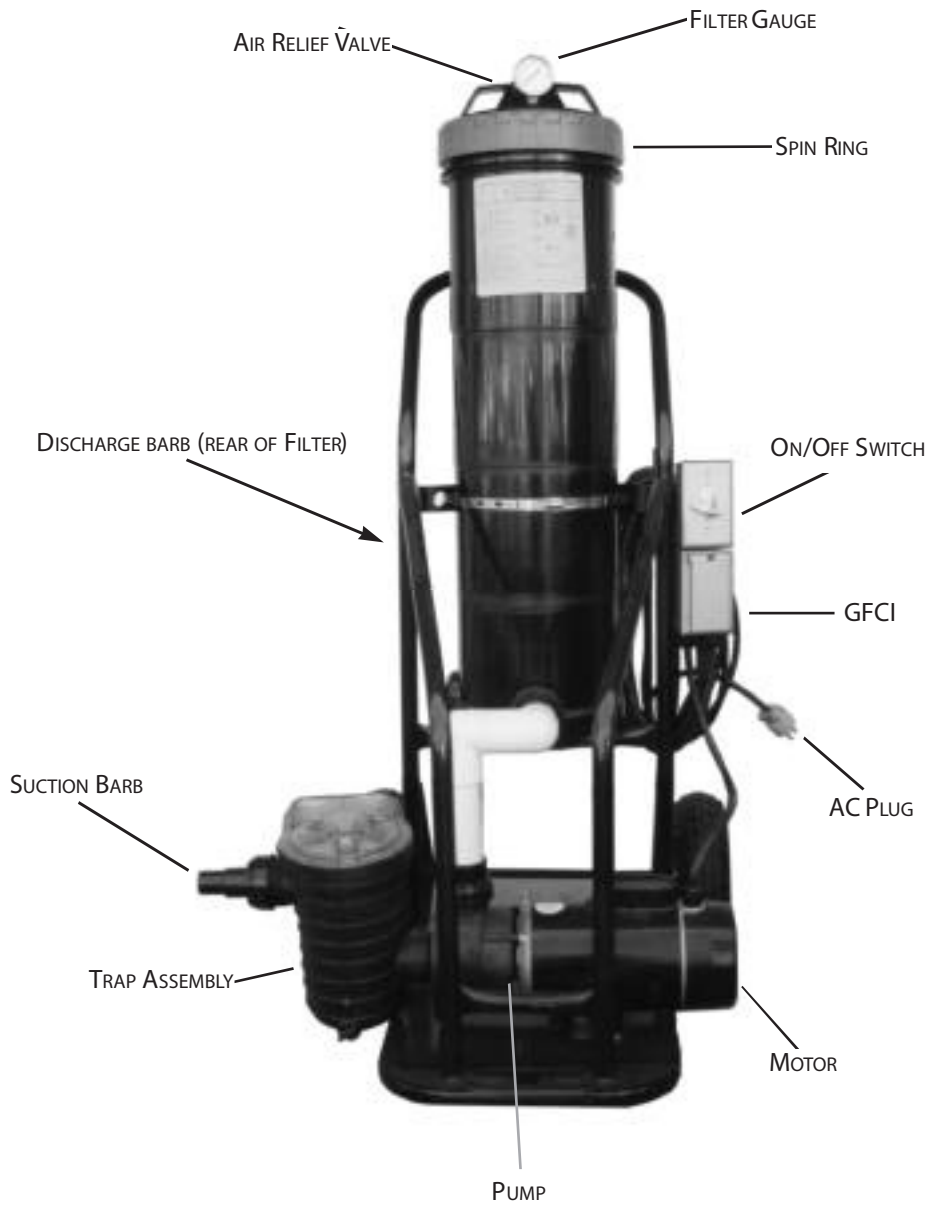


Contents

- 1 Introduction
- 2 Vacuum System Diagram
- 3 Use of Vacuum System
- 4 Pump Diagram
- 5 Filter Diagram
- 6 Troubleshooting

Warranty located on back cover

VACUUM SYSTEM DIAGRAM





OPERATING INSTRUCTIONS

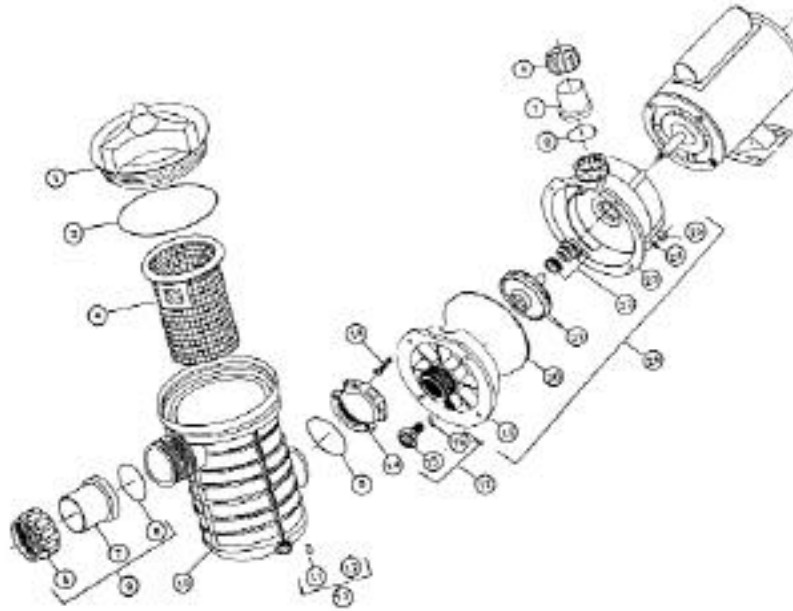
⚠ CAUTION



1. Place unit at side of pool.
2. Make sure ON/OFF switch is set on OFF.
3. Make sure GFCI is reset.
4. Plug unit into 20 amp GFCI outlet
5. Attach discharge hose to outlet side of filter and make sure the union barb is tight with original O-ring in place and place discharge hose into pool.
6. Open bleeder valve at top of filter to purge air from tank.
7. Fill hair and lint trap with water and retighten lid.
8. Flood the suction hose by holding completely under water, then place hand over suction hose to keep water in the hose while attaching to the side union barb (make sure union barb is tight with original O-ring in place). May use optional union check valve.
9. Start unit by turning the ON/OFF switch to ON position.
10. Once unit starts to prime watch air relief valve on top of filter. When water comes out of the air relief valve - all air has been purged from the filter. Retighten air relief valve and allow a 1 -2 minutes for the pump to prime.
11. Vacuum as needed.
12. If unit does not prime redo steps 1-9.
13. **Turn off all power and disconnect the unit from the power source before any service is performed.**
14. Any questions may be answered by calling Holland-Hills direct at (905) 853-6835

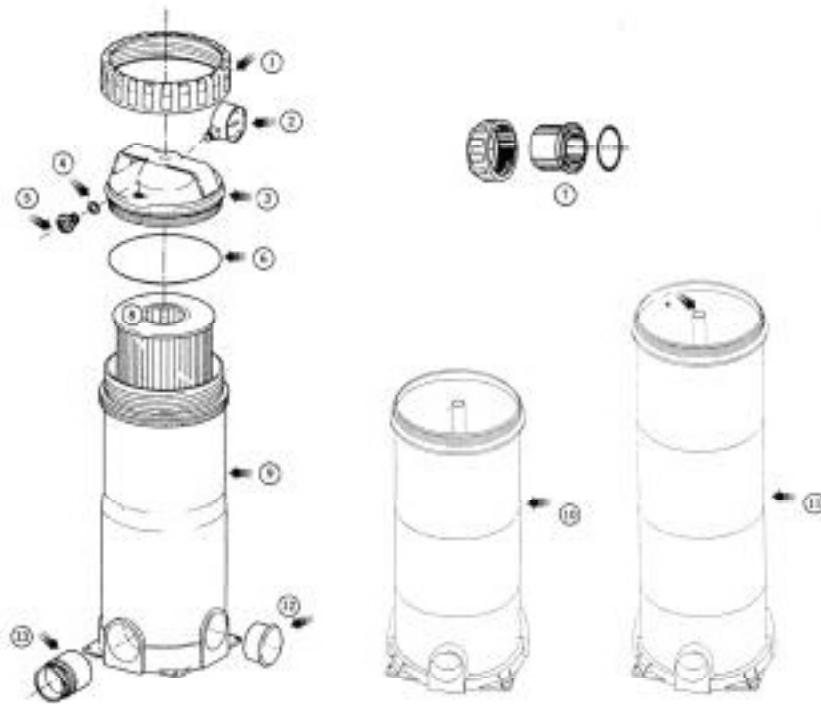


PUMP ASSEMBLY DIAGRAM



Index#	Part#	Description	Index#	Part#	Description
1	320101	Lid, Pump, Plat, Clear	14	300100C	2" Split Nut w/Screws
2	320102	O-Ring, Pump Pot Lid	15	207004	25" Blood Plug
3	-----	Part Deleted	16	201010	25" O-Ring
4	320134	Strainer Basket	17	207006	25" Blood Plug w/O-Ring
6	700102	1.5" Union Nut	18	300001	Screws
7	700101	1.5" Female Slip Tail Piece	19	300005	Face Plate, 48 Frame
8	700103	1.5" Union O-Ring	20	300004	O-Ring, Face Plate
9	UT5010A	1.5" Female Slip w/Nut & O-Ring	21	300005	IMP Green 1.5HP Full R.
10	300121	Roasting, Pump Pot 1.5"	21A	300006	IMP Red 75HP Full R.
11	201002	0.5" O-Ring	21B	300007	IMP Grey 1HP Full R.
12	200005	0.5" Blood Plug	21C	300008	IMP Green 1.5HP Full R.
13	300002	0.5" Blood Plug & O-Ring	22	300009	Mech Seal
			23	300010	Noise, 48 Frame
			24	300011	#10 Lock Washer
			25	300012	Nut, #10-32 Brass

FILTER ASSEMBLY DIAGRAM



#	Part #	Description
1	205101	Lock Ring
2	205102	Gauge
3	205103	Filter Head
4	205104	O'Ring for Bleed Plug
5	205105	Bleed Plug
6	205106	O'Ring for Filter Head
7	UF5010A	1 1/2" Female Slip Union
8	See Replacement
9	205107	65 Sq. Ft. Filter
10	205108	100 Sq. Ft. Filter
11	205109	130 Sq. Ft. Filter
12	205111	Plug
13	UF5050	2" Male Slip x 1.5" Union Thread
14	205003	Bleed Pipe 1/2" dia.

TROUBLESHOOTING



MOTOR WILL NOT START

1. Check Circuit Breakers
2. Check for incorrect or loose wire connections.
3. Make sure the correct power supply is being used.
4. Any on/off switch or pneumatic switch should be in the "on" mode.

MOTOR OVERHEATING AND CYCLING ON AND OFF

1. Check for incorrect or loose wire connections.
2. Check for low voltage supply (frequently caused by undersized wire).
3. Make sure the motor gets a fresh air supply and the vents are kept unclogged.

MOTOR MAKES HUMMING NOISE BUT WILL NOT START

1. Make sure motor shaft turns free.
2. Check for jammed impeller or an obstruction in casing.
3. Check for low voltage and undersized wire.

PUMP WILL NOT PRIME

1. Make sure pump is installed at the proper level and the plumbing lines have been correctly installed to allow the water to enter pump freely.
2. Open air control valves to release any possible air lock.
3. Make sure all suction and discharge lines are clear and unobstructed and all valves are opened.
4. Check for air leaks in the suction line.

LOW WATER FLOW

1. Check filter pressure gauge, filter may need cleaning.
2. Check for clogged plumbing lines.
3. Check for worn or damaged impeller.
4. Check for low voltage.

WATER LEAKS

1. Check contamination or damage to shaft rotary seal. Replace if necessary.
2. Check compression fitting (union connectors), make sure they are properly aligned and secured. Hand tighten only. Do not use tools.
3. Make sure the O-ring is properly sealed and not damaged.

NOISES

1. Check plumbing vibration – make sure lines are adequately supported.
2. Check for cavitation, due to obstruction in or undersized suction line.



"We take fun seriously..."

2 YEAR LIMITED WARRANTY

PUMPS, FILTERS AND MOTORS FOR SWIMMING POOLS, SPAS AND HOT TUBS

From engineering through production and inspection, Advantage Pumps and Motors are manufactured with exacting care and close attention to detail. This control of quality coupled with the superior features incorporated in the design insure long life and trouble-free performance.

WARRANTY COVERAGE

All Advantage pumps and motors for swimming pools, spas and hot tubs are warranted to be free from defects in materials and/or workmanship for a period of two years from the date of sale to the ultimate user.

EXCLUSIONS FROM THIS WARRANTY

This warranty does not cover:

1. Problems from improper installation.
2. Problems resulting from abuse, misuse, negligence or accident by any party other than Advantage, such as, but not limited to, damage to swimming pool fixtures caused by operation without benefit of total submersion, damage to parts caused by installers, damage to pump parts caused by "dry" operation (loss of prime or obstruction on plumbing lines), etc.
3. Problems resulting in whole or part from alteration or modification of these products by any party.

WARRANTY OBLIGATIONS OF ADVANTAGE

Should a defect in workmanship and/or material in any item covered by this warranty become evident during the term of the warranty Advantage will, at its option, repair or replace such item at its own cost and expenses. Advantage is not, however, responsible under this warranty for any cost of shipping or transportation of the equipment or parts thereof to or from the service department. Also, Advantage is not liable for any loss of time, inconvenience, incidental expenses such as telephone calls, labor, or material charges incurred in connection with the removal or replacement of the equipment, or any other incidental or consequential damages.

WARRANTY PROTECTS ORIGINAL RETAIL PURCHASER

This warranty extends to the consumer who made the original retail purchase only and is not enforceable by any other party.

Holland-Hills Distributing
3-415 Harry Walker Parkway North
Newmarket, ON
L3Y 7B3

info@Holland-Hills.com
www.Holland-Hills.com
905 853-6835